

mountain state MISSION OFFERING



DOING CHRIST'S WORK *together*

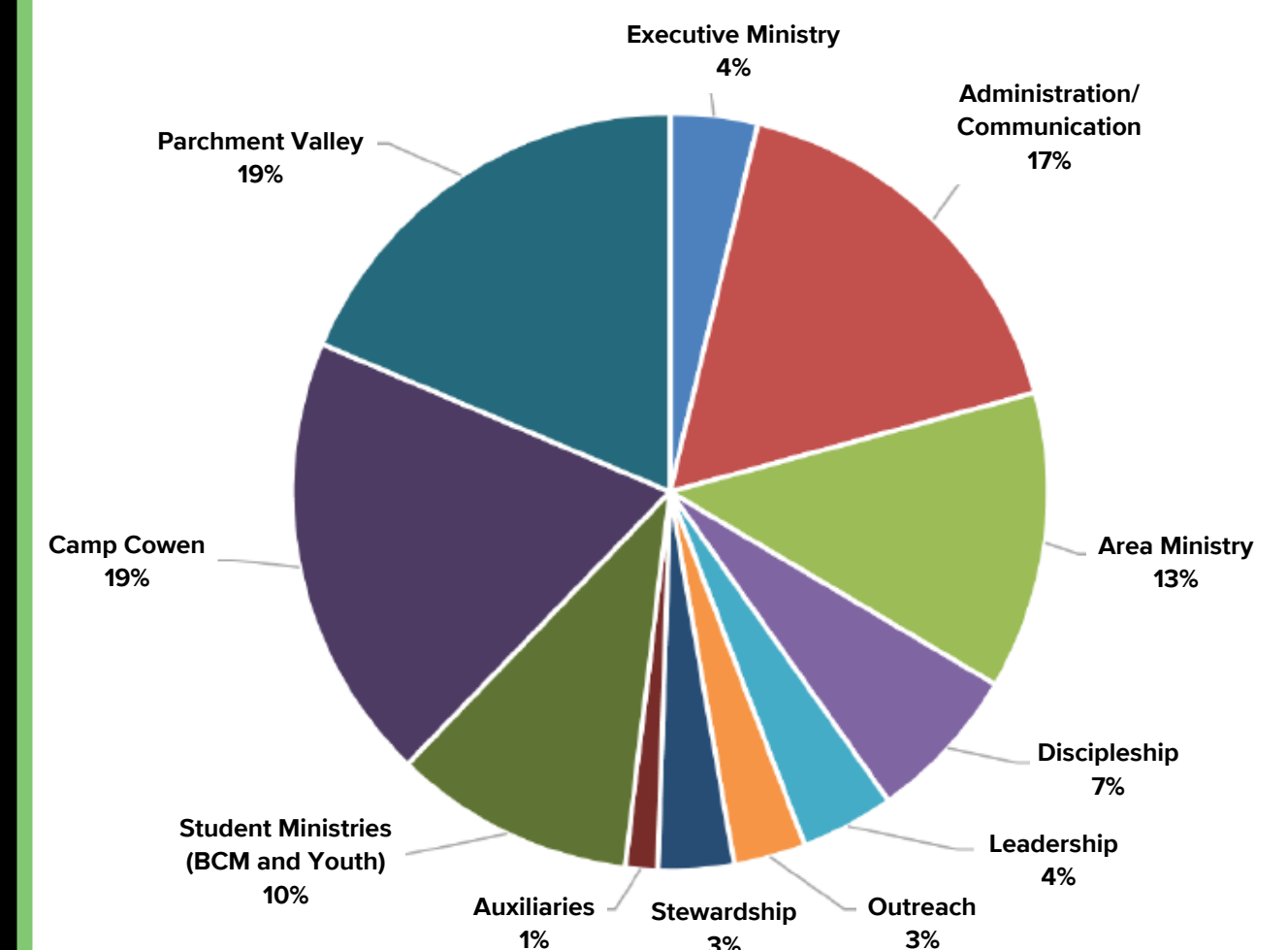
2022 Emphasis

Intentionally Engaging Communities for Christ

Priorities:

- **Intentionally** developing the next generation of leaders
- **Intentionally** planting churches and microchurches to reach the unreached
- **Intentionally** helping churches better engage their communities
- **Intentionally** equipping parents and grandparents to better disciple their families
- **Intentionally** mobilizing our WVBC family to go to the ends of the earth

2022 WVBC Budget Breakdown



Learn more or request
promotional resources

